

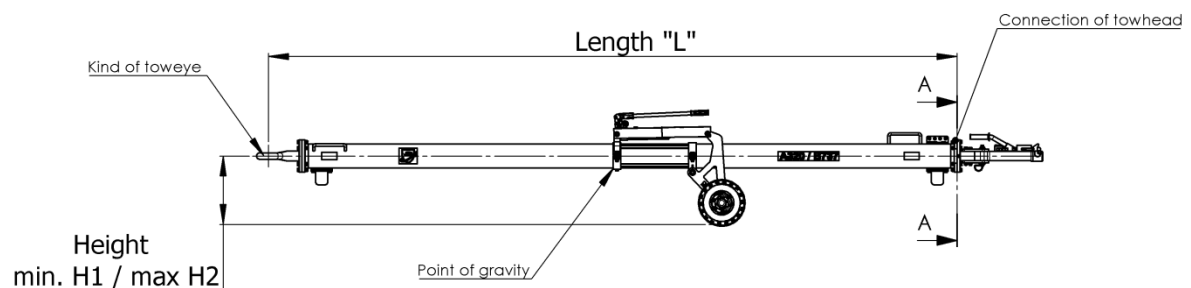
Stand: Rev. 2	TOW bar: Requested data about tow-head and/or tow-eye to retrofit other brands with JMS-components	

Please provide pictures of the tow bar to check the condition and submit as follows:

1. Manufacturer of tow bar for conversion (code):
2. Previous operation at which aircraft types(s):

Please submit the following data for a check by JMS for tow bar-suitability with JMS-towhead and/or tow-eye to desired aircraft:

3. Length „L“ – from center of tow-eye to connection of old towhead
4. Min. height „H1“
5. Max. height „H2“

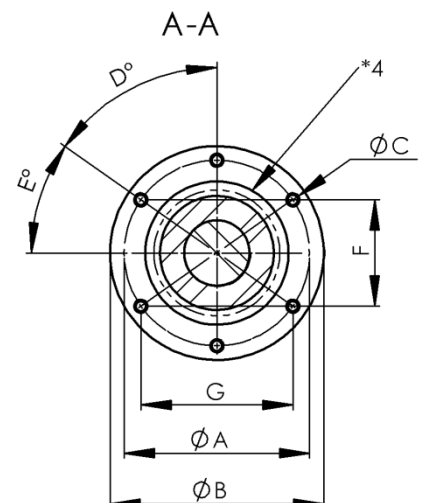


Furthermore please check:

6. Possibility of adjustment of the undercarriage.
=> Some towheads/tow-eyes are heavier/lighter, so the center of gravity should be adjustable.
7. Kind of tow-eye - some Aircraft manufacturer recommend shock absorbed tow-eyes
8. Flange connection for new JMS - towhead / tow-eye

In case of a flange connection as shown beside, please indicate dimensions A / B / C and dimensions D / E or F / G as well as the flange thickness!

In case of another connection of towhead / tow-eye to tow-body send a photo – the needed dimensions will be defined by this photo.



*4: Please submit inner clear diameter of tow-tube for immersing components at corresp. ends.

Issued by:	MM	Erstellt am: 14.06.2016	Page 1 of 1
Approved by:	xxx	Freigegeben am: xx.xx.20XX	
File name:	Retrofit_different_towbars_JMS_0616.docx		