

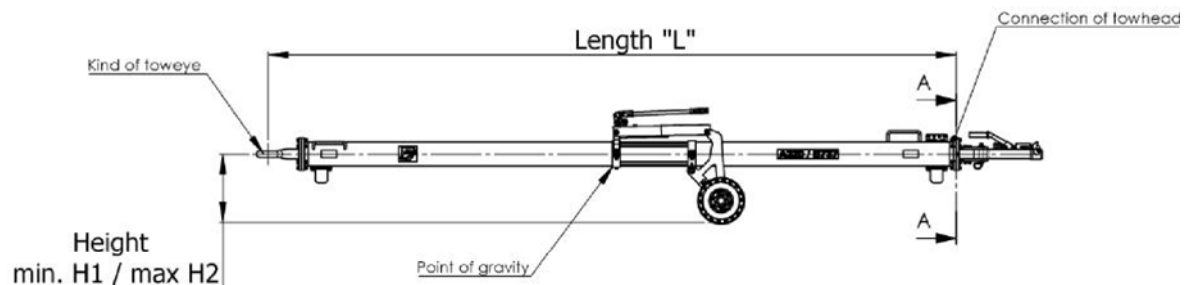
## TOW bar: Requested data about tow-head and/or tow-eye to retrofit other brands with JMS-components

Please provide pictures of the tow bar to check the condition and submit as follows:

1. Manufacturer of tow bar for conversion (code):
2. Previous operation at which aircraft types(s):

Please submit the following data for a check by JMS for tow bar-suitability with JMS-towhead and/or tow-eye to desired aircraft:

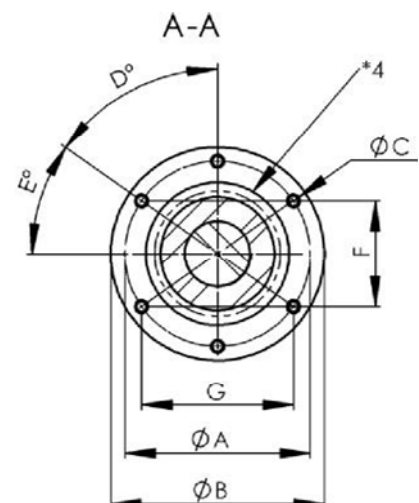
3. Length „L“ – from center of tow-eye to connection of old towhead
4. Min. height „H1“
5. Max. height „H2“



Furthermore please check:

0. Possibility of adjustment of the undercarriage.  
 => Some towheads/tow-eyes are heavier/lighter, so the center of gravity should be adjustable.
1. Kind of tow-eye - some Aircraft manufacturer recommend shock absorbed tow-eyes
2. Flange connection for new JMS - towhead / tow-eye  
 In case of a flange connection as shown beside, please indicate dimensions A / B / C and dimensions D / E or F / G as well as the flange thickness!

In case of another connection of towhead / tow-eye to tow-body send a photo – the needed dimensions will be defined by this photo.



\*4: Please submit inner clear diameter of tow-tube for immersing components at corresp. ends.